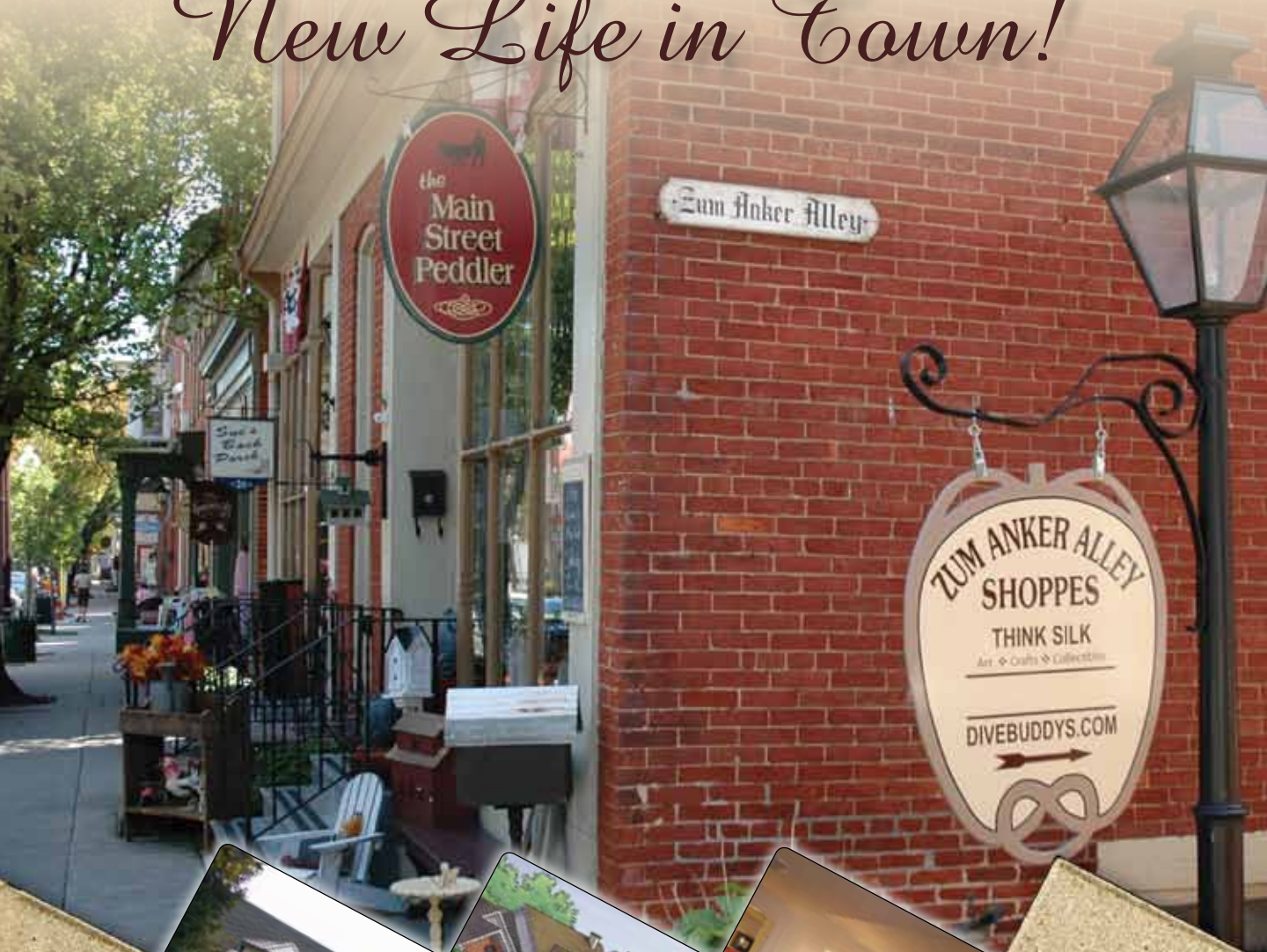


*Open Your Door to a
New Life in Town!*



**Introducing
The Townhomes on
Hendricks Place at
Moravian Manor**



A Community within a Community™

Are you bored with all the typical choices in retirement communities? Would you like your next home to be part of a real community, one that's complete with its own history, conveniences, and pleasures as well? Your retirement living choices just got better with the new Townhomes on Hendricks Place at Moravian Manor in historic Lititz!

Living in the town of Lititz, a fulfilling, uncomplicated retirement lifestyle awaits you...

Step into the past with a stroll along Main Street, complete with historically restored 18th century buildings. ❁ Relax in the Lititz Springs Park, a cornerstone for community gatherings. ❁ Linger over a meal or bite to eat at the town's four star restaurant, unique coffee and pastry shops, deli's, or old-time soda fountain shops. ❁ Swim some laps or take a class at the Lititz rec Center. ❁ Shop the 70+ independently owned boutiques, specialty shops, and antique stores. ❁ Immerse yourself in the many community-sponsored and cultural events such as Second Friday, Old Fashion Community Days, and Movies in the Park.

You can do all this and more when you open your door to a new life in town. It's no wonder Lititz was named as one of the National Trust for Historic Preservation's 2009 Top 12 Distinctive Destinations in the U.S.!

Set in heart of northern Lancaster County, you'll also benefit from the area's close proximity to theatres, countless cultural and historical attractions, shopping outlets, and many other destinations for your family and friends when they visit.



Established in 1756 by the Moravian Church, the town played an active role in the Revolutionary & Civil Wars, the industrial revolution...with the 19th century opening of Wilbur Chocolate and Sturgis Prezel Bakery, and served as an early musical, educational, and commercial hub. Today, Lititz maintains its hometown charm mixed with a sophisticated flair, as well as a strong sense of community and entrepreneurial spirit.

With its small town charm and big offerings, a new lifestyle awaits you in Lititz!



With the new Townhomes on Hendricks Place, just steps away from downtown Lititz, now there's no need to downsize your home in order to enjoy the perks of an established, well-respected retirement community.

Three distinctive townhome models—from 1,803 to 1,907 sq. ft. of single floor living space—have been thoughtfully designed with all the trimmings of contemporary living to accommodate your dynamic lifestyle. If your lifestyle or interests necessitate more space, a second floor can be finished to give you room for that hobby, special collection, or entertaining guests.

Here, the only aspects you'll want to retire from will be concerns related to homeownership and planning for future health care needs.



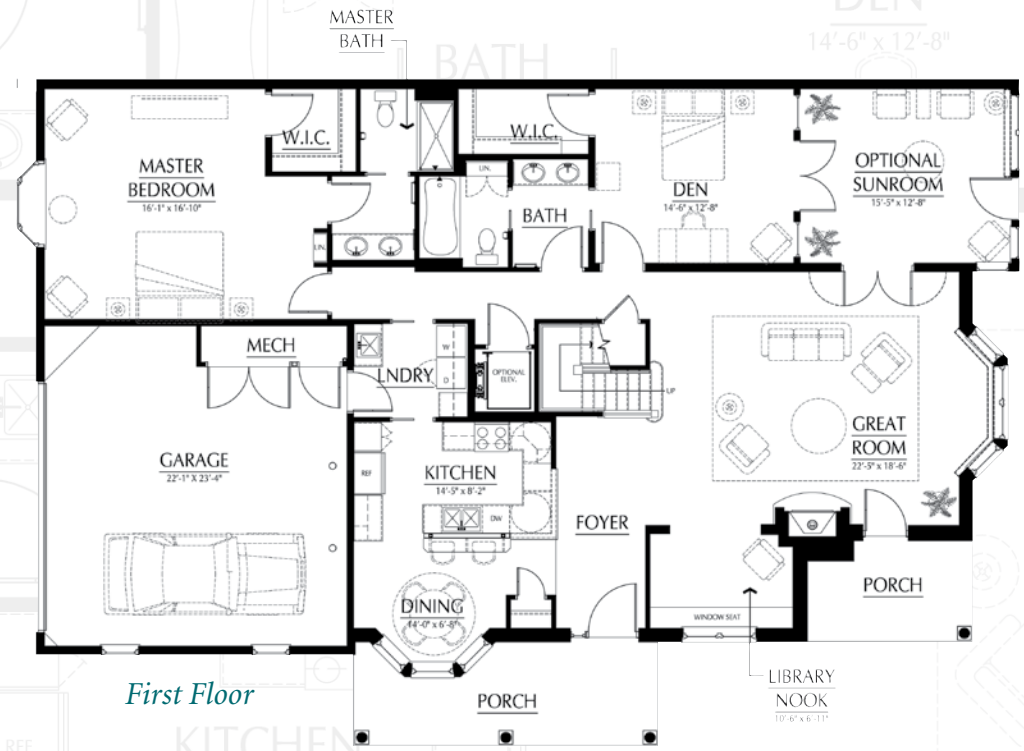
Standard amenities include:

- Two-car garage
- Front and rear covered porches
- Two full baths, or two-and-one-half baths
- Gas fireplace with quartz and wood trimmed surround
- Hardwood flooring with attractive trim details
- Bay windows
- Nine foot ceilings
- Deluxe cabinetry and built-ins with upgraded appliances
- Laundry room with side-by-side washer and dryer
- Efficient gas heat and central air conditioning

- Energy efficient windows, doors, and insulation
- Additional second floor storage
- Free annual membership to the newly expanded Lititz rec Center

Optional features include:

- Sunroom and patio
- Meal plans for our Garden Court Dining Room and the Gallery Café
- Finished living space on the second floor
- Elevator to the second floor



The townhomes include spacious floor plans including a Great Room with a vaulted ceiling.

Model A	
First Floor	1,907 sq. ft.
Garage	516 sq. ft.
Optional Sunroom	198 sq. ft.
Optional Second Floor	926 sq. ft.

**To preview the two other available floor plans or site-plan, please contact our marketing director at 717-626-0214.*

A Community within a Community

*W*ithin the close-knit community of Lititz, Moravian Manor offers all the best for retirement living and more. In addition to the new townhomes, Moravian Manor offers several other residence styles with a variety of floor plans from the freestanding cottages to the one- and two-bedroom Manor Greene and Garden Court Apartments. As a continuing care retirement community, personal care and health care are available at Moravian Manor if ever needed in the future.



We invite you to experience firsthand how refreshing retirement living in historic Lititz can be when you open your door to a new life in town.

To learn how you can reserve **one of the few remaining homes** and **take advantage of the special pre-construction pricing**, contact Nicole Michael, marketing director, at 717-626-0214 or email her at NicoleM@moravianmanor.org. Reserving a unit now will help ensure you receive the special pre-construction pricing, an offer which ends upon groundbreaking. Visit us online at www.moravianmanor.org to learn more about the townhomes and about our Community within a Community.



A Community within a Community™



300 West Lemon Street • Lititz, PA 17543-2398
(717) 626-0214 • www.moravianmanor.org